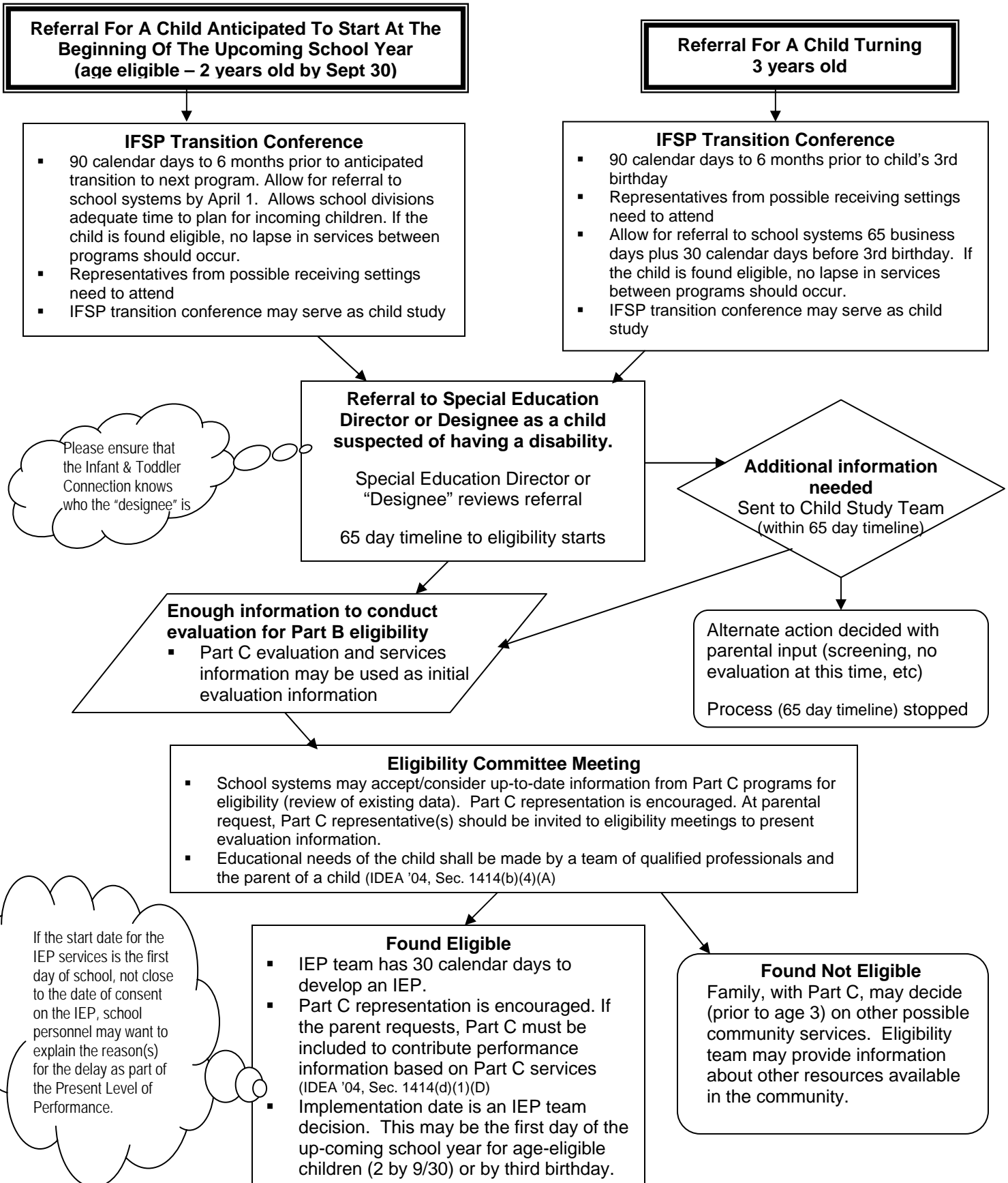


Referrals from Part C/Infant & Toddler Connection Programs (I&TC)

(refer to Transition Technical Assistance Document at www.doe.virginia.gov/VDOE/sped/earlychildhoodtransitiondoc.pdf)



The referral process presumes parental consent for timely referral from the I&TC to the local school system. If parents choose to refer their child at a later date, the local system has 65 days from the time of the receipt of the referral by the Special Education Director or designee to complete the evaluation and eligibility process. If the child is determined eligible, the school division has 30 calendar days to develop the IEP. Services must be provided in accordance with the IEP. This does not imply that the school system has to use the full amount of time, but may do so if needed.